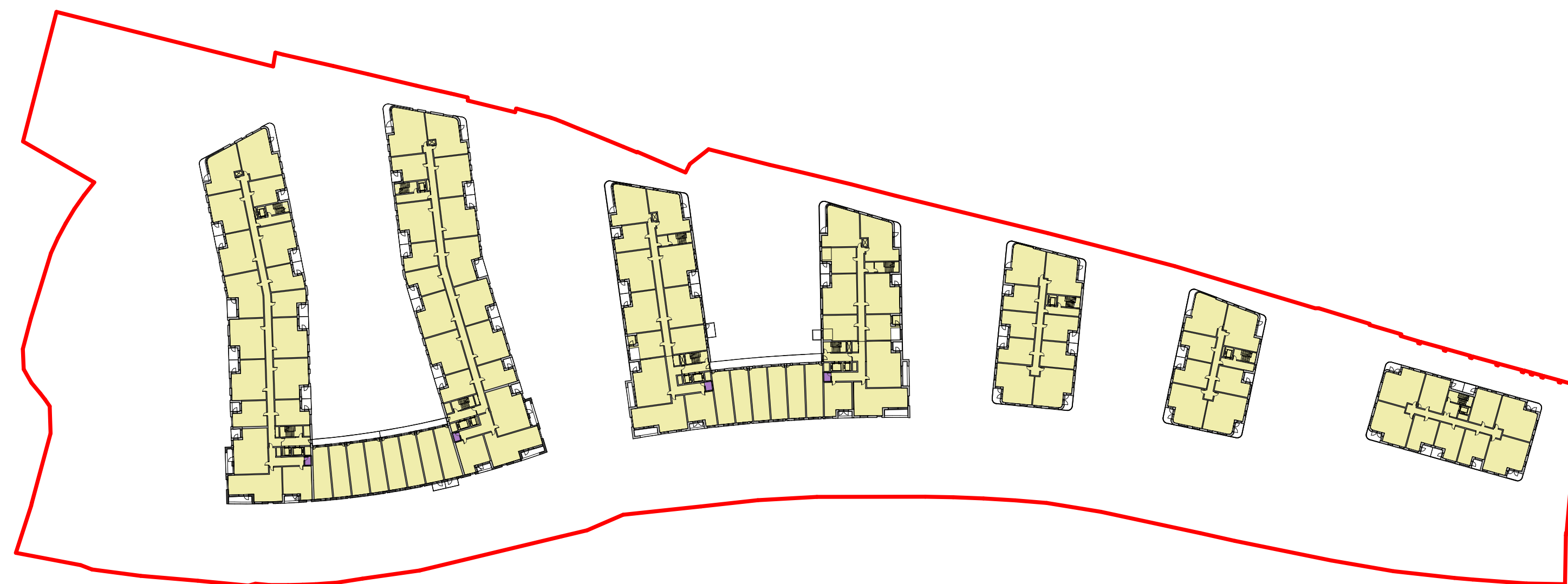




Area Type

- 1. Residential
- 2. Communal Facilities
- 3. Retail
- 4. Plant
- 4. Ancillary
- 5. Creche
- 6a. Carparking
- 6b. Bicycle Parking
- 7. Waste
- 8. Public Access Lift

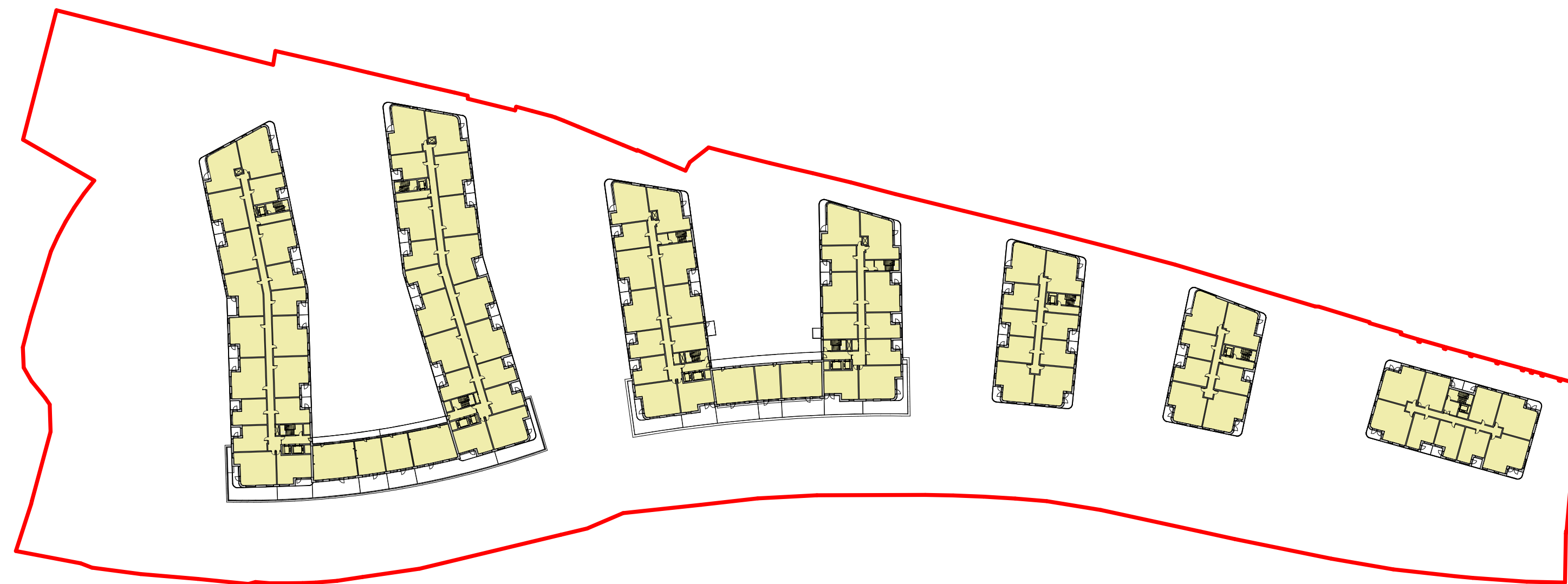
3 01 - FIRST FLOOR
1:1000



Area Type

- 1. Residential
- 2. Communal Facilities
- 3. Retail
- 4. Plant
- 4. Ancillary
- 5. Creche
- 6a. Carparking
- 6b. Bicycle Parking
- 7. Waste
- 8. Public Access Lift

2 02 - SECOND FLOOR
1:1000



Area Type

- 1. Residential
- 2. Communal Facilities
- 3. Retail
- 4. Plant
- 4. Ancillary
- 5. Creche
- 6a. Carparking
- 6b. Bicycle Parking
- 7. Waste
- 8. Public Access Lift

1 03 - THIRD FLOOR
1:1000

Level	Name	Comments	Area
1. Residential			
B01 - BASEMENT	1. Residential	Block B - Core B1	62.2 m²
B01 - BASEMENT	1. Residential	Block B - Core B2	61.6 m²
B01 - BASEMENT	1. Residential	Block B - Escape B1	27.0 m²
B01 - BASEMENT	1. Residential	Block B - Escape B2	22.5 m²
B01 - BASEMENT	1. Residential	Block C - Core C1	55.0 m²
B01 - BASEMENT	1. Residential	Block C - Core C2	45.4 m²
B01 - BASEMENT	1. Residential	Block D - Core D	39.7 m²
00 - LOWER GROUND FLOOR	1. Residential	Block A - Core	53.7 m²
00 - LOWER GROUND FLOOR	1. Residential	Block A - Core	53.7 m²
00 - LOWER GROUND FLOOR	1. Residential	Block A - Core	90.7 m²
00 - LOWER GROUND FLOOR	1. Residential	Block A - Core	66.7 m²
00 - LOWER GROUND FLOOR	1. Residential	Block B - Core	24.4 m²
00 - LOWER GROUND FLOOR	1. Residential	Block B - Core	22.2 m²
00 - LOWER GROUND FLOOR	1. Residential	Block B - Core	97.9 m²
00 - LOWER GROUND FLOOR	1. Residential	Block B - Core	105.1 m²
00 - LOWER GROUND FLOOR	1. Residential	Block C - Core C1	103.7 m²
00 - LOWER GROUND FLOOR	1. Residential	Block C - Core C2	39.7 m²
00 - LOWER GROUND FLOOR	1. Residential	Block D - Core	45.5 m²
00 - GROUND FLOOR	1. Residential	Block A	2855.5 m²
00 - GROUND FLOOR	1. Residential	Block B	1509.3 m²
00 - GROUND FLOOR	1. Residential	Block B - Core	18.4 m²
00 - GROUND FLOOR	1. Residential	Block B - Core	47.3 m²
00 - GROUND FLOOR	1. Residential	Block C - Core 1	97.4 m²
00 - GROUND FLOOR	1. Residential	Block C - Core 2	52.4 m²
00 - GROUND FLOOR	1. Residential	Block D - Core	44.2 m²
01 - FIRST FLOOR	1. Residential	Block A	1967.5 m²
01 - FIRST FLOOR	1. Residential	Block A	3303.2 m²
01 - FIRST FLOOR	1. Residential	Block C	379.3 m²
01 - FIRST FLOOR	1. Residential	Block C	489.9 m²
01 - FIRST FLOOR	1. Residential	Block D	674.5 m²
02 - SECOND FLOOR	1. Residential	Block A	3497.1 m²
02 - SECOND FLOOR	1. Residential	Block B	2240.3 m²
02 - SECOND FLOOR	1. Residential	Block C	637.1 m²
02 - SECOND FLOOR	1. Residential	Block C	530.2 m²
02 - SECOND FLOOR	1. Residential	Block D	653.3 m²
03 - THIRD FLOOR	1. Residential	Block A	3197.2 m²
03 - THIRD FLOOR	1. Residential	Block B	1978.1 m²
03 - THIRD FLOOR	1. Residential	Block C	637.1 m²
03 - THIRD FLOOR	1. Residential	Block C	530.2 m²
03 - THIRD FLOOR	1. Residential	Block D	653.7 m²
04 - FOURTH FLOOR	1. Residential	Block A	1425.8 m²
04 - FOURTH FLOOR	1. Residential	Block A	1449.1 m²
04 - FOURTH FLOOR	1. Residential	Block B	954.3 m²
04 - FOURTH FLOOR	1. Residential	Block B	788.1 m²
04 - FOURTH FLOOR	1. Residential	Block C	637.1 m²
04 - FOURTH FLOOR	1. Residential	Block C	530.2 m²
04 - FOURTH FLOOR	1. Residential	Block D	495.6 m²
05 - FIFTH FLOOR	1. Residential	Block A	1295.0 m²
05 - FIFTH FLOOR	1. Residential	Block A	1453.2 m²
05 - FIFTH FLOOR	1. Residential	Block B	954.3 m²
05 - FIFTH FLOOR	1. Residential	Block B	788.2 m²
05 - FIFTH FLOOR	1. Residential	Block C	637.1 m²
05 - FIFTH FLOOR	1. Residential	Block C	457.4 m²
05 - FIFTH FLOOR	1. Residential	Block D	494.6 m²
06 - SIXTH FLOOR	1. Residential	Block A	1381.1 m²
06 - SIXTH FLOOR	1. Residential	Block B	882.8 m²
06 - SIXTH FLOOR	1. Residential	Block B	716.8 m²
06 - SIXTH FLOOR	1. Residential	Block C	564.3 m²
1. Residential: 58			42914.2 m²
2. Communal Facilities			
00 - GROUND FLOOR	2. Communal Facilities	Gym	336.8 m²
00 - GROUND FLOOR	2. Communal Facilities	Lobby B2	11.4 m²
00 - GROUND FLOOR	2. Communal Facilities	Multi purpose room B	59.7 m²
00 - GROUND FLOOR	2. Communal Facilities	Multipurpose room A1	93.7 m²
00 - GROUND FLOOR	2. Communal Facilities	Multipurpose room A2	73.6 m²
00 - GROUND FLOOR	2. Communal Facilities	Residents' lounge A	54.9 m²
00 - GROUND FLOOR	2. Communal Facilities	Residents' lounge B	23.2 m²
00 - GROUND FLOOR	2. Communal Facilities	Residents' support (A)	54.9 m²
2. Communal Facilities: 8			708.1 m²
3. Retail			
00 - LOWER GROUND FLOOR	3. Retail	Anchor Ancillary	37.9 m²
00 - LOWER GROUND FLOOR	3. Retail	Anchor Ancillary	445.5 m²
00 - LOWER GROUND FLOOR	3. Retail	Anchor Ramp	141.7 m²
00 - LOWER GROUND FLOOR	3. Retail	Anchor Unit	1080.2 m²
00 - LOWER GROUND FLOOR	3. Retail	Cafe	86.3 m²
00 - LOWER GROUND FLOOR	3. Retail	Restaurant	242.9 m²
00 - LOWER GROUND FLOOR	3. Retail	Retail Unit	602.5 m²
3. Retail: 7			2636.8 m²
4. Ancillary			
B01 - BASEMENT	4. Ancillary	Store	6.6 m²
B01 - BASEMENT	4. Ancillary	Store	10.1 m²
B01 - BASEMENT	4. Ancillary	Store	4.5 m²
00 - GROUND FLOOR	4. Ancillary	Store	4.2 m²
01 - FIRST FLOOR	4. Ancillary	Store	4.7 m²
01 - FIRST FLOOR	4. Ancillary	Store	4.7 m²
02 - SECOND FLOOR	4. Ancillary	Store	4.5 m²
02 - SECOND FLOOR	4. Ancillary	Store	4.4 m²
02 - SECOND FLOOR	4. Ancillary	Store	4.7 m²
02 - SECOND FLOOR	4. Ancillary	Store	4.7 m²
4. Ancillary: 10			53.0 m²
4. Plant			
B01 - BASEMENT	4. Plant	Plant - Exhaust	30.9 m²
B01 - BASEMENT	4. Plant	Plant - Intake	37.2 m²
B01 - BASEMENT	4. Plant	Plant - Intake	35.1 m²
00 - LOWER GROUND FLOOR	4. Plant	Block A Break Tank	169.8 m²
00 - LOWER GROUND FLOOR	4. Plant	Block A CHP	169.9 m²
00 - LOWER GROUND FLOOR	4. Plant	Block A exhaust	36.4 m²
00 - LOWER GROUND FLOOR	4. Plant	Block A intake	39.0 m²
00 - LOWER GROUND FLOOR	4. Plant	Block A Sprinklers	71.2 m²
00 - LOWER GROUND FLOOR	4. Plant	Block B	16.4 m²
00 - LOWER GROUND FLOOR	4. Plant	Block B - Comms	21.3 m²
00 - LOWER GROUND FLOOR	4. Plant	Block B - Plant	242.7 m²
00 - LOWER GROUND FLOOR	4. Plant	ESB Sub - switchrooms	58.7 m²
00 - LOWER GROUND FLOOR	4. Plant	Meter room	26.5 m²
00 - LOWER GROUND FLOOR	4. Plant	Meter room	43.7 m²
00 - LOWER GROUND FLOOR	4. Plant	Meter room	55.4 m²
00 - LOWER GROUND FLOOR	4. Plant	Meter room A2	38.2 m²
00 - LOWER GROUND FLOOR	4. Plant	Stand by Generator	73.6 m²
4. Plant: 17			1165.8 m²
5. Creche			
00 - GROUND FLOOR	5. Creche	Creche	236.0 m²
5. Creche: 1			236.0 m²
6a. Carparking			
B01 - BASEMENT	6a. Carparking	Anchor Escalator	71.7 m²
B01 - BASEMENT	6a. Carparking	Anchor Trolley Bay	90.0 m²
B01 - BASEMENT	6a. Carparking	Basement Carpark	8876.0 m²
00 - LOWER GROUND FLOOR	6a. Carparking	Block A Carpark	4378.9 m²
00 - LOWER GROUND FLOOR	6a. Carparking	Block BC Main carpark	4017.0 m²
6a. Carparking: 5			17433.8 m²
6b. Bicycle Parking			
00 - LOWER GROUND FLOOR	6b. Bicycle Parking	Block A	314.7 m²
00 - LOWER GROUND FLOOR	6b. Bicycle Parking	Block A	219.0 m²
00 - LOWER GROUND FLOOR	6b. Bicycle Parking	Block A	240.0 m²
00 - LOWER GROUND FLOOR	6b. Bicycle Parking	Block B	360.3 m²
00 - LOWER GROUND FLOOR	6b. Bicycle Parking	Block B	297.7 m²
6b. Bicycle Parking: 5			1431.9 m²
7. Waste			
B01 - BASEMENT	7. Waste	Block C	60.5 m²
B01 - BASEMENT	7. Waste	Block C	49.4 m²

SITE DRAWINGS LEGEND:

REFER TO BARRET MAHONY CIVIL ENGINEERING DRAWINGS FOR ALL DRAINAGE/ ROAD INFORMATION.

SURVEY INFORMATION PROVIDED BY JONES ENGINEERING ON 23.4.2019.

PLEASE REFER TO THE PAUL HOGARTH COMPANY LANDSCAPE DRAWINGS FOR ALL INFORMATION ON EXISTING AND PROPOSED TREES, MATERIAL FINISHES AND LAYOUT. ANY REFERENCE TO TREES/ HARD OR SOFT LANDSCAPING IN THIS DRAWING ARE INDICATIVE ONLY.

Level	Name	Comments	Area
B01 - BASEMENT	7. Waste	Block C	32.8 m²
B01 - BASEMENT	7. Waste	Block D	35.0 m²
00 - LOWER GROUND FLOOR	7. Waste	Block A Main	127.6 m²
00 - LOWER GROUND FLOOR	7. Waste	Block B	46.3 m²
00 - LOWER GROUND FLOOR	7. Waste	Block B	20.7 m²
00 - LOWER GROUND FLOOR	7. Waste	Block B Main	142.1 m²
7. Waste: 8			514.3 m²
8. Public Access Lift			
00 - LOWER GROUND FLOOR	8. Public Access Lift	Podium Access Lift / Lobby	16.2 m²
00 - GROUND FLOOR	8. Public Access Lift	Podium Access Lift	7.1 m²
8. Public Access Lift: 2			23.3 m²
Grand total: 121			67117.2 m²

ALL APARTMENT TYPES SHOULD BE READ IN CONJUNCTION WITH DRAWING NO.8 P1601, P1602, P1603, P1604 AND HOUSING QUALITY

REV	DATE	DESCRIPTION	CHK	DRN
P1	26/11/2019	ISSUED FOR PLANNING APPROVAL		

ISSUED FOR PLANNING APPROVAL

CLIENT
Atlas GP Limited

PROJECT
Project Claremont

DRAWING
GROSS AREA SCHEDULES

PROJECT NUMBER: 950520
DATE: 26/11/19
SCALE: 1:1000
DRAWN/CHECKED: OJ/ DB

REVISION: P1 CLR-HJL-A-1902
STATUS CODE: A1

Henry J Lyons

Architecture + Interiors
henryjlyons.com
+353 1 889 3333
info@henryjlyons.com
53-54 Pearse Street
Dublin D02 K666